

# PACT Webinar

Göteborg  
120903

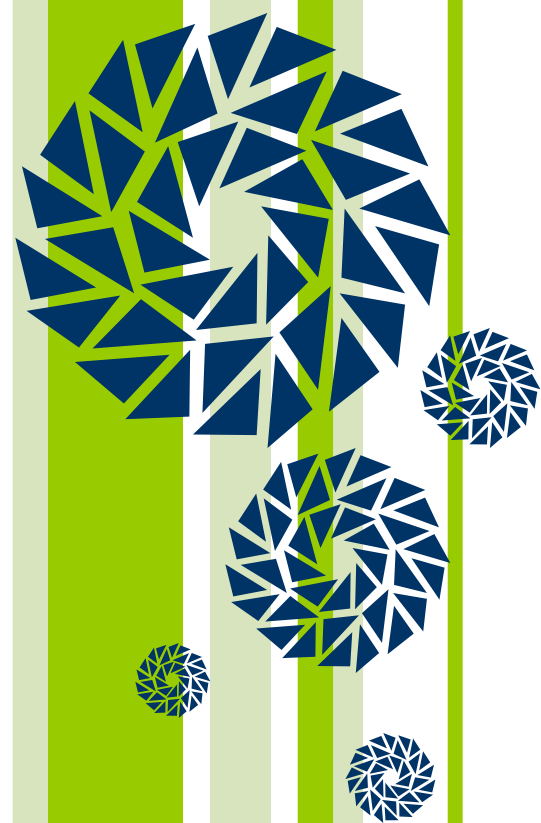


# Agenda

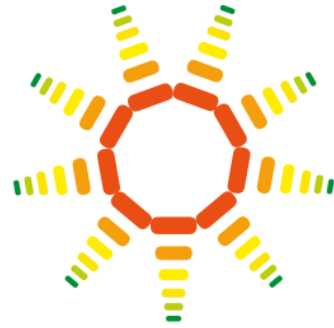
- Bakgrund
- Ramverket
- I praktiken
- Exempel

# Bakgrund

Gothenburg  
2012



Vad är



PACT?

PACT är ett empiriskt ramverk utvecklat för att utvärdera och utveckla kapaciteten hos organisationer och de system som de ingår i för att fatta starka beslut som tar hänsyn till klimatförändring.

# Kapacitet är viktigt!

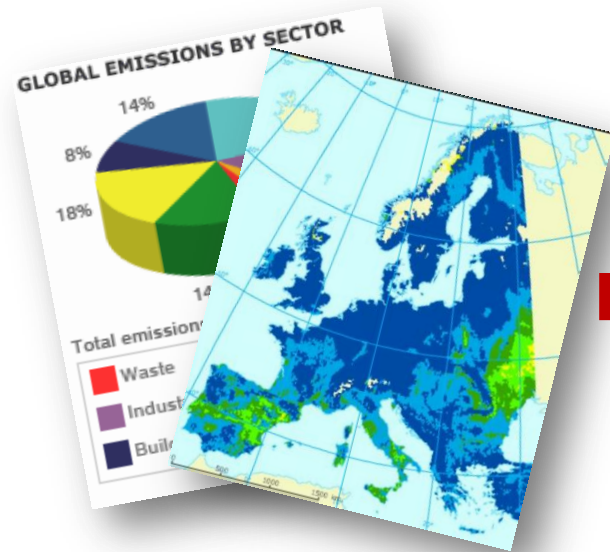
Information

≠

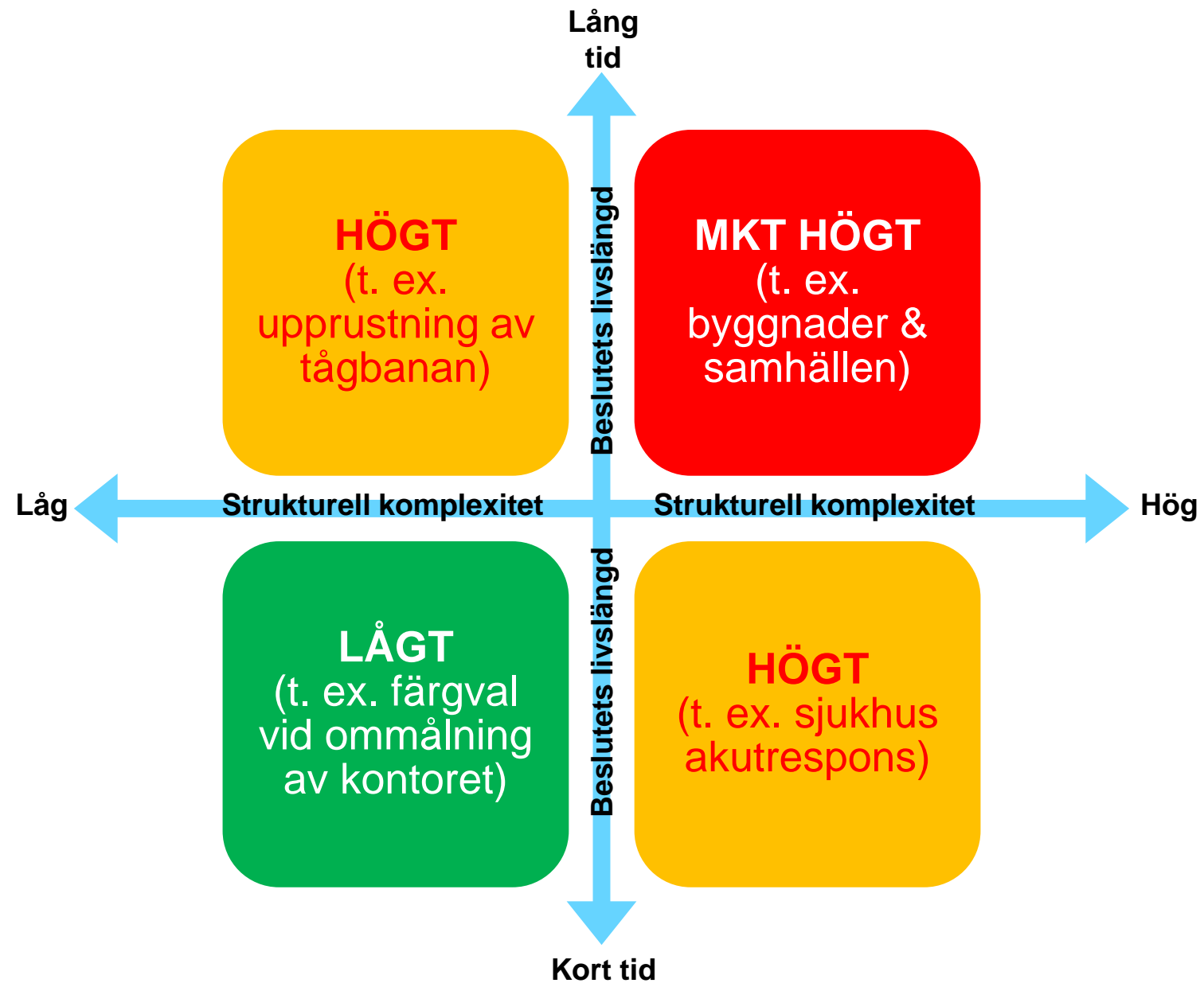
Medvetenhet

≠

Meningsfullt  
agerande



# När behövs kapacitet?



## Fokus på beslut...

- **Tillfällen** för att göra skillnad sker sporadiskt
- Konsekvenserna av **stora beslut** kan leva kvar i decennier
- **Kapaciteten** att känna igen vilka beslut som behöver ta hänsyn till klimatförändringsproblematiken är låg
- **Kapaciteten** att fatta bättre beslut är ännu lägre
- Särskild uppmärksamhet på **kapacitetsutveckling** behövs för att försäkra att beslut stärker motståndskraften och återhämtningsförmågan i organisationen eller organisationens omgivning





# Ramverket

Göteborg  
2012





# Sex responsnivåer

Sex förutsägbara  
responsnivåer:



1. Kärnverksamhetsfokus
2. Intressentuppmärksam
3. Effektiv ledning
4. Genombrottsprojekt
5. Strategisk resiliens
6. 'Champion' organisation

# Nio kapacitetsområden

Nio komplementära  
kapacitetsområden:



## Strategisk

- Medvetenhet
- Inverkan
- Ledarskap

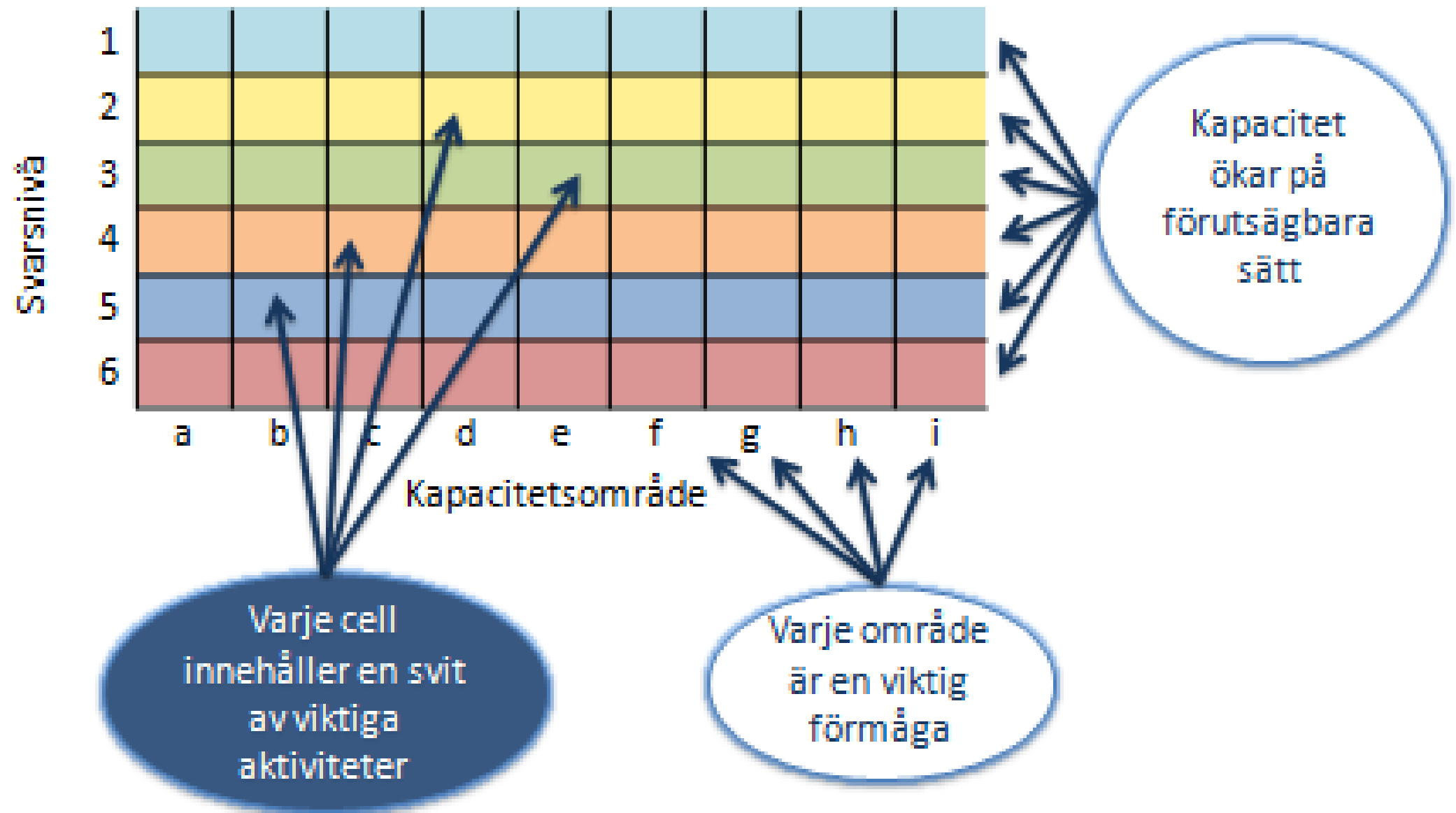
## Utveckling

- Förändringsagenter
- Samarbete
- Lärande

## Verksamhet

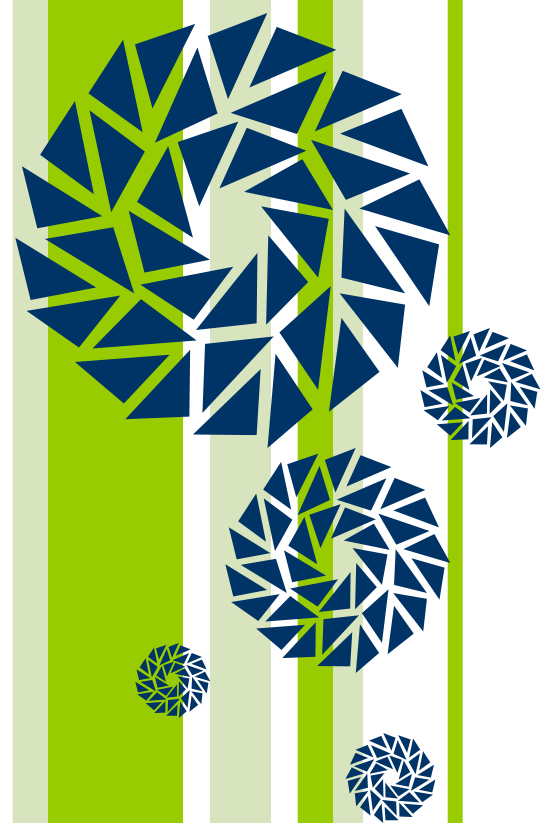
- Verksamhetsledning
- Programomfattning & sammanhang
- Expertis & bevis

# Ramverket



# I praktiken

Gothenburg  
2012

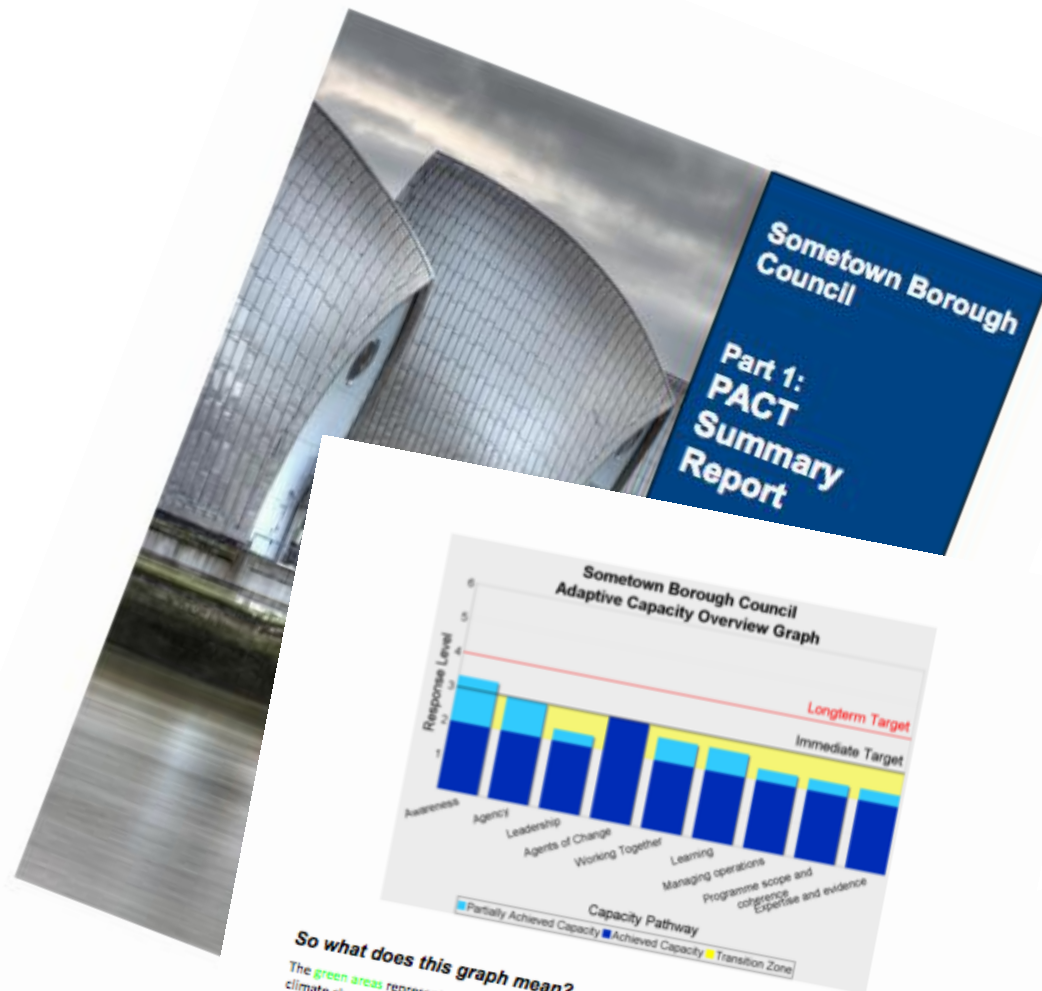


# Action Planner





# PACT rapper



**So what does this graph mean?**

The **green areas** represent where Somertown Borough Council's current response level on adapting to climate change is solid. Any **lighter blue areas** represent where there are indications of early activity. While the areas of early activity are not yet solid at the higher level, these represent signs of where your business is beginning to move ahead.

The two horizontal lines on the graph show the immediate and recommended longer term target levels of performance for Somertown Borough Council, which were assessed based on the information you provided in your responses to our self-assessment exercise:

**The brown line: Your recommended immediate target.**

The brown line on the graph represents the level of climate adaptation performance that we strongly recommend that you should reach and maintain into the future. We call this level of performance PACT 'Response Level 3', or 'efficient management'. This is the level of performance where climate adaptation is integrated into your management systems, much as energy management or health and safety might be usually be seen as among the strategic priorities of the organisation. Nonetheless achieving this level of performance will provide a strong operational foundation from which you can go further if you wish.


**The red line: Your suggested longer term 'stretch' target**

The red line represents the level of climate adaptation performance that we suggest you consider as a longer term target. This is PACT 'Response Level 4' or 'breakthrough projects'. Achieving this level of performance would allow your organisation to begin to explore some of the bigger strategic challenges that the impacts of climate change pose to your services and to begin (in comparison with others) to look for innovative solutions to them. This level of performance goes beyond the 'good practice' ambitions of PACT



**Schedule 2: Activities that need attention in your transition zone**  
This is a list of 'crucial' and 'important' activities within your current transition zone that appear not to have been fully implemented. The main focus of your programme should normally be to implement these fully.

Name	Pathway	Level	Relevance	Status	Description	
Growing awareness mitigation risks and opportunities (MIT)	A	Awareness	RL4	Crucial	Partially implemented	There has been analysis of some (but not necessarily of all) strategic risks and opportunities on mitigation
Recognition of emissions extends over life cycle (MIT)	A	Awareness	RL4	Crucial	Not implemented	A life cycle perspective is increasingly adopted when quantifying how the organisation contributes to climate change. For example, there has been analysis to identify the main activities that lead to Scope 3 emissions (ie those that occur outside the organisation's boundary) and to understand their importance relative to Scope 1 and 2 emissions.
Growing awareness carbon / energy risks and opportunities 10 to 30 years (MIT)	A	Awareness	RL4	Important	Not implemented	Non-specialist managers can identify some but not all strategic risks and opportunities resulting from energy and carbon (etc) reduction requirements over medium term (10 to 30 years) and recognise need to know more
Priorities for action identified outside boundary and on longer term risks (MIT)	B	Agency	RL4	Crucial	Planned not implemented	There has been deeper assessment of longer term energy- and carbon-related risks and opportunities to the core activities of the organisation. This would extend beyond the organisation's boundary to include Scope 3 (broader lifecycle) emissions and will sometimes extend beyond the short term towards the lifespan of major decisions - 10 years and perhaps longer. But it may not yet be close to comprehensive.
Some breakthrough	C		RL4	Crucial	Not	The organisation has set breakthrough mitigation targets

 **PACT**

6

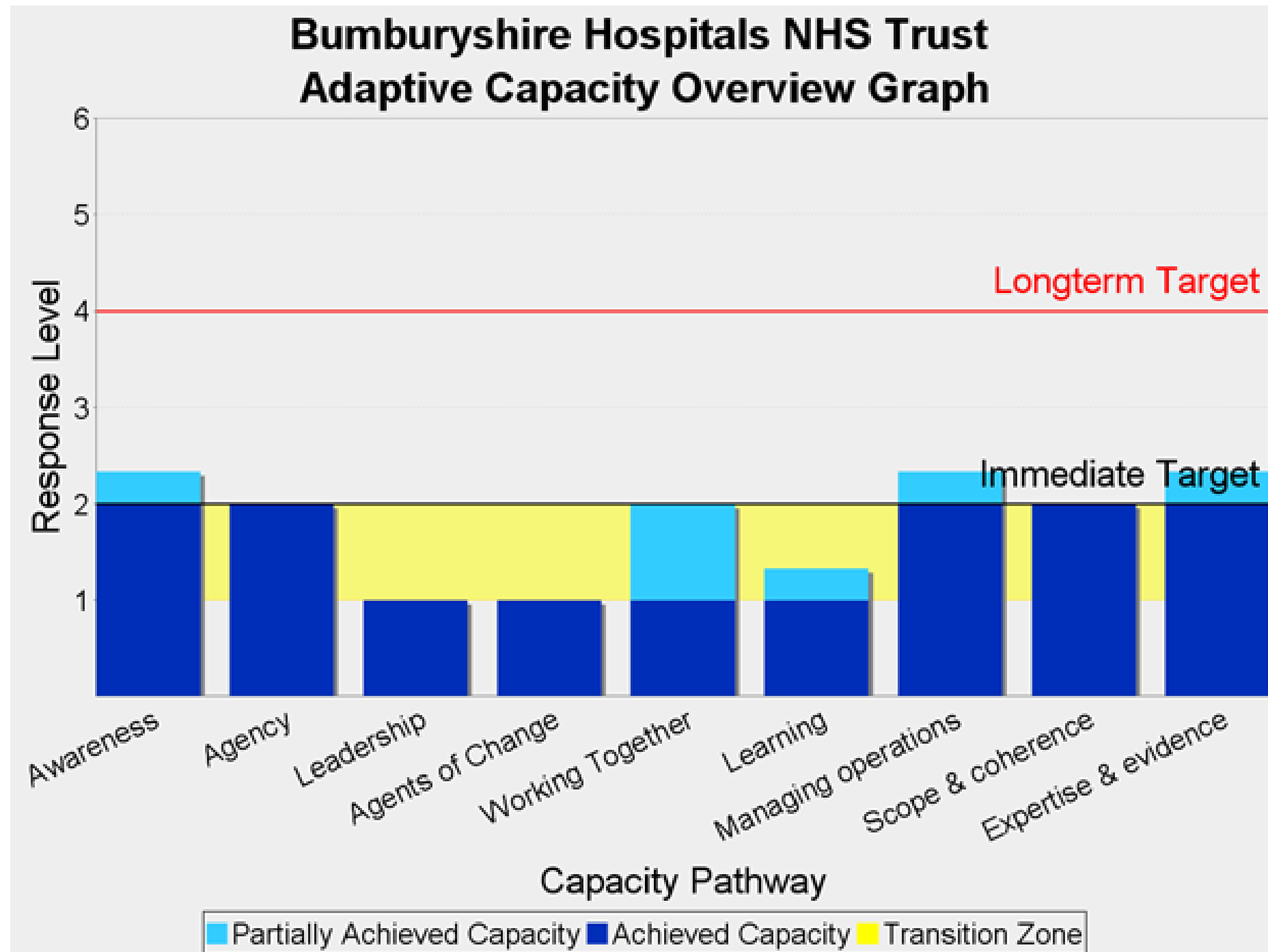


# Exempel

Gothenburg  
2012

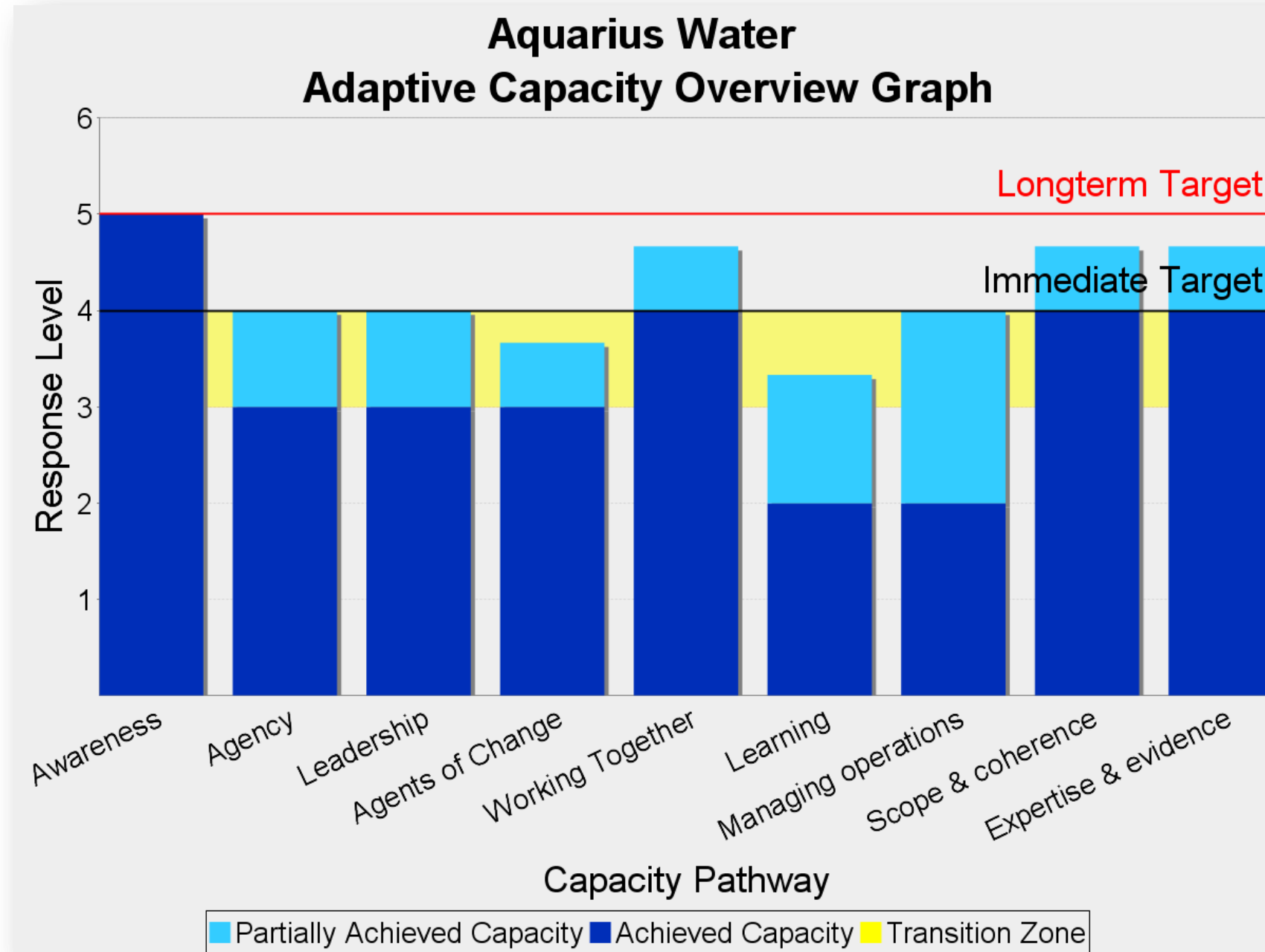


# Exempel 1: Granskning av akutmottagning med låg kapacitet



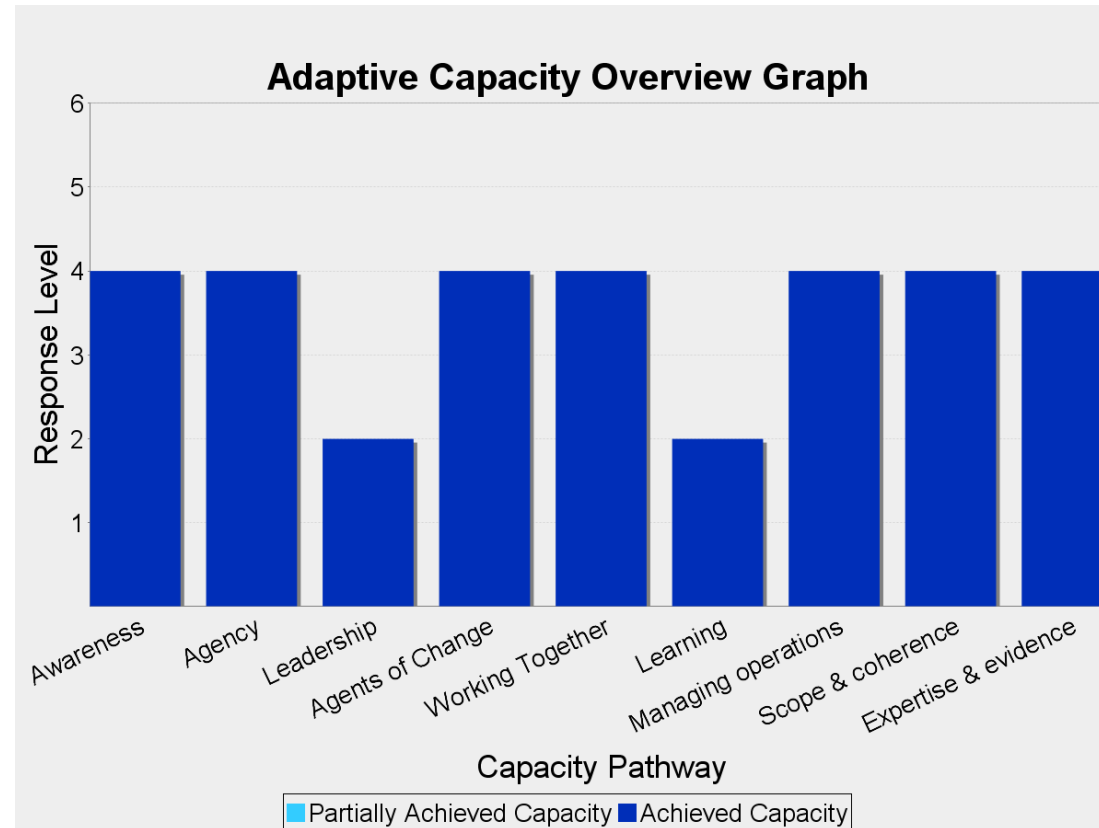


# Exempel 2: Granskning av vattenbolag med hög kapacitet



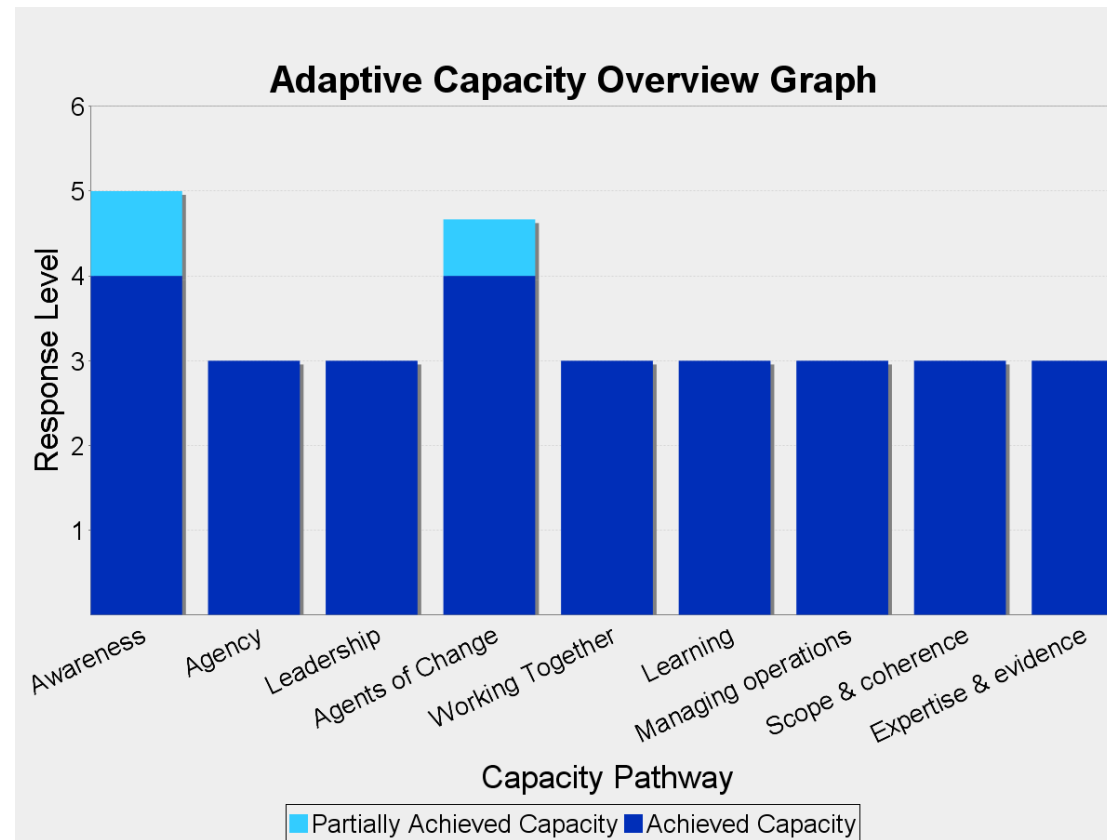
# Responsmönster

## Mönster A: Efterliggande



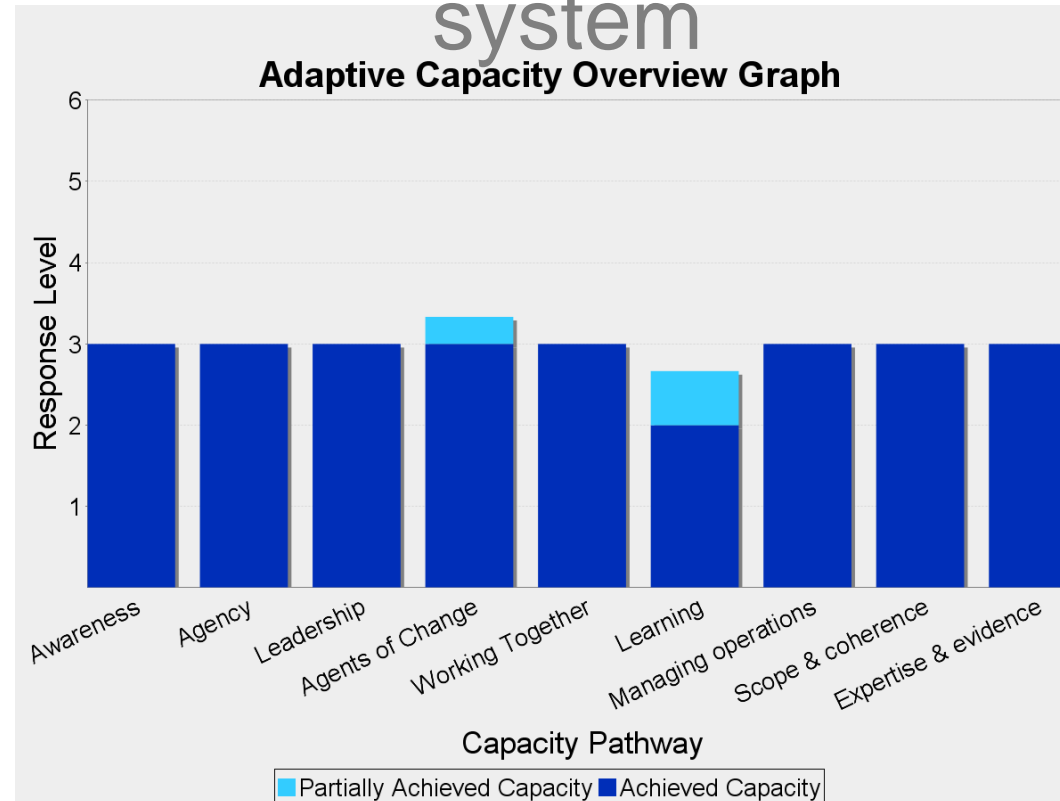
# Responsmönster

## Mönster B: Vissa led rusar iväg



# Responsmönster

## Mönster C: Ett stabilt system



# PACT referenser

Gothenburg  
2012



## Varför PACT?



*Under 2011 genomförde UK Climate Impacts Programme en oberoende, världsomspännande granskning av de ledande ramverken för utvärdering och utveckling av organisatorisk kapacitet för att adressera klimatfrågan. Slutsatsen av granskningen var att PACT förser organisationer med en överlägsen metodik för att utvärdera och utveckla organisatorisk och systematisk kapacitet att minska klimatpåverkan och hantera effekter av klimatförändring.*

*"[PACT] allows organisations to consider adaptive capacity more holistically than other frameworks"*

Peter Tangney  
UK Environment  
Agency

# PACT projekt hittills

		OMFATTNING			
		Enskild Org	Regional nivå	Nationell sektor	Tvär-nationell
SEKTOR / INDUSTRI	Kommuner	✓	✓	✓	
	Myndigheter	✓		✓	
	NGOs	✓		✓	
	Naturskydd	✓		✓	
	Jordbruk	✓	✓	✓	✓
	Bostadssektorn	✓		✓	
	Transport	✓		✓	
	Textiler	✓		✓	
	Bank / Försäkring	✓		✓	
	Vattenförsörjning & vattenrening	✓		✓	
	Folkhälsa	✓		✓	
	Tillsynsmyndigheter	✓		✓	

# Varför PACT?



*"...the PACT approach was inspirational in the way it could so rapidly provide a clearly structured analysis of our complex adaptation programme...."*

Senior Manager in The Netherlands'  
Climate Adaptation Programme

*"[PACT] opened doors for me... People became interested and noticed... across the council. It helped develop a climate change strategy with capital put away for projects."*

Anna Buckingham, Crawley Borough Council

*"I may use [the PACT report] to help justify a full-time person on climate change adaptation PACT was highly structured"*

Nigel Whiter, South West Water Ltd

*"...it is fortunate that in the UK a sufficiently sophisticated tool (PACT) with a strong conceptual framework has already been co-developed within a large organisation, extensively trialled in many other UK organisations and fine tuned to make it applicable for many organisational types..."*

*UK Climate Impacts Programme (UKCIP) Review of seventeen approaches to assessing organisational climate capacity*

*"The report was very well-written. It was encouraging without being patronising. We are happy to help in any way needed to take this forward."*

Karen Taylor, Hampshire Cosmetics Ltd.

*"PACT gave us useful insight and is being used to inform our adaptation plan... a very comprehensive approach"*

Jane Dodson, Hastings Borough Council





# Tack!

Gothenburg  
2012

